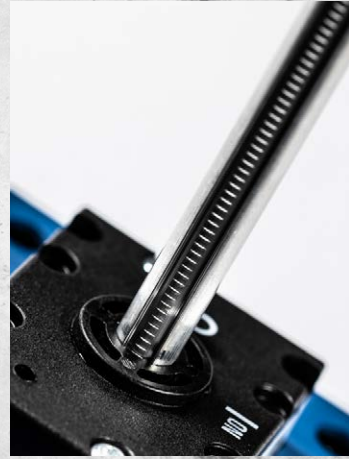
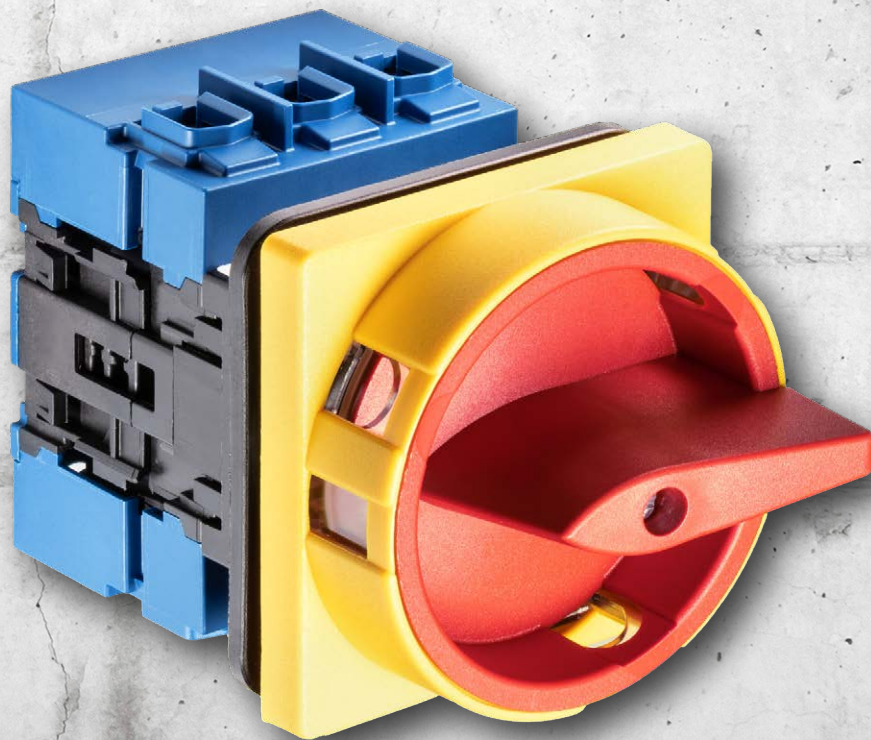


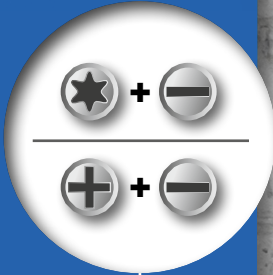
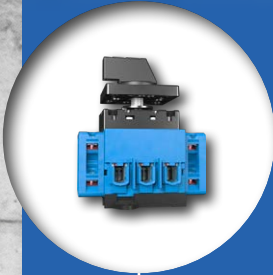
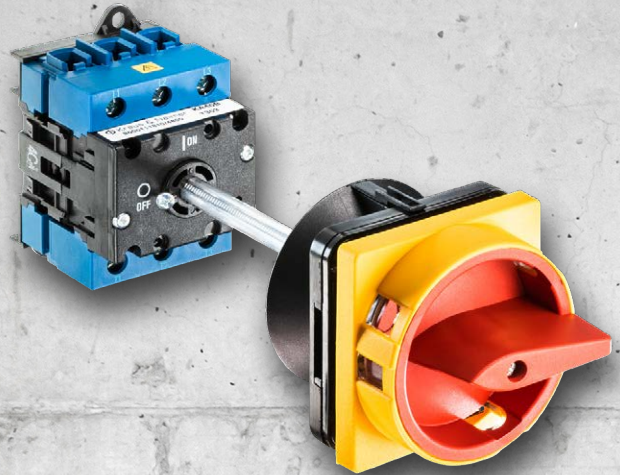
 Kraus & Naimer

MADE IN AUSTRIA



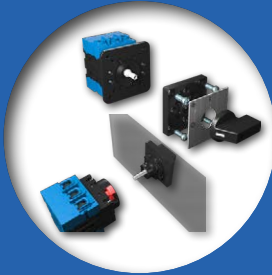
THE NEW KA SERIES
RELIABLE & FLEXIBLE

THE NEW KA SERIES HIGHLIGHTS



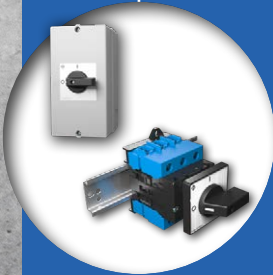
Cross recessed screws & Torx clamping screws

Auxiliary contacts



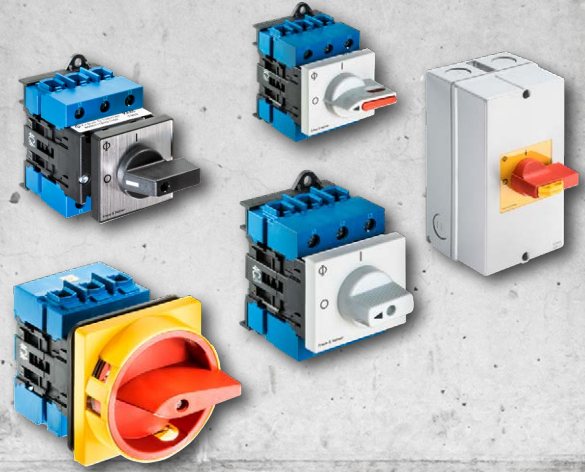
Central mounting & 4-hole mounting

Distributor installation & enclosure installation



Optional features





**Conductor cross-section
up to 25 mm²**

**3-pole and 4-pole
changeover switches**



3- to 8-pole on-off switches

Through-type connector PE + N



ROHS & REACH

THE NEW KA SERIES

RELIABLE &

FLEXIBLE

The new **Kraus & Naimer KA switch series** combines innovation and high quality standards and ensures reliable switching and disconnecting of circuits.

The KA switches are **extremely versatile** and can be used in different applications. They were specifically developed for machine tools, distribution cabinets and all applications that require a high degree of reliability.

The exceptional Kraus & Naimer **modular system** enables the implementation of different custom solutions. In this new switch series, as well as in all Kraus & Naimer products flexibility and top quality are perfectly combined.

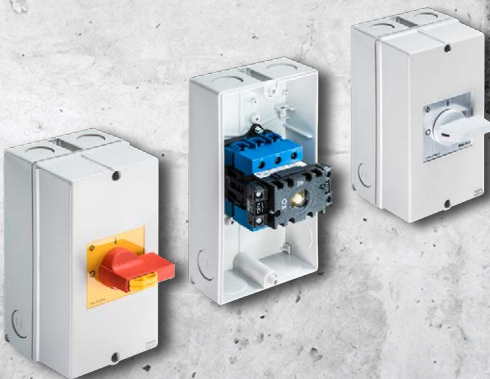
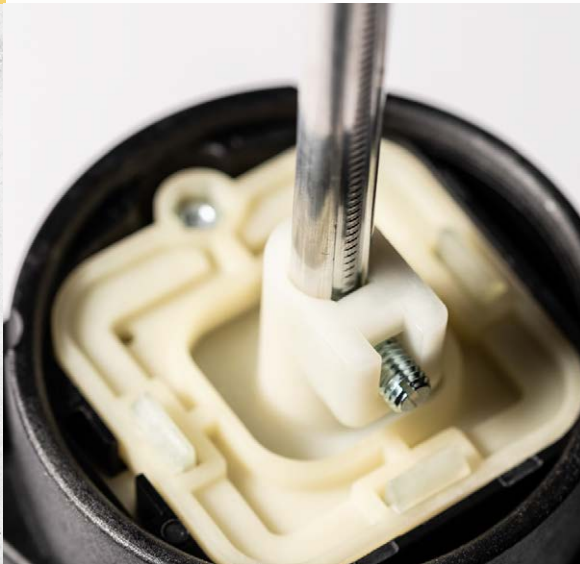
The **big terminal compartment** enables the connection of different electrical conductors with finger-safe IP20 terminals with a cross-section of up to 25 mm². The thermal rated current of the KA switches is between 40 and 63 A. **Cross recessed and Torx clamping screws** are also available upon request.

Thanks to our global service network and to our globally approved products that adhere to international standards we are your partner of choice for control switches and switch disconnectors worldwide.

Kraus & Naimer

The Blue Line switchgear

**&
BLE**



A SELECTION

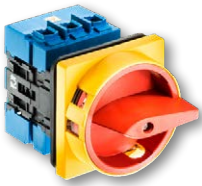
Dimensions in mm

MAIN SWITCH WITH EMERGENCY FUNCTION

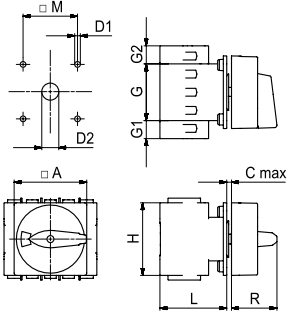
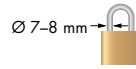
Front mounting, 4-hole mounting

IP66/67

Locking device (F-handle)



For 3 padlocks



Name	Art. no.	Name	Art. no.
------	----------	------	----------

3-pole	KA40B.T203/01.E	70012701	KA40B.T103/01.E	70012699	+
	KA40BT.T203/01.E	70032755	KA40BT.T103/01.E	70032185	+
	KA63B.T203/01.E	70012705	KA63B.T103/01.E	70012703	+
	KA63BT.T203/01.E	70032651	KA63BT.T103/01.E	70032186	+

D1	D2	M	A	G	G1	G2	H	L	R	Cmax
5	10-15	48	64	50	-	-	64	58,9	40	4

PE + N ¹ 3-pole	KA40B.T205/01.E	70031168	KA40B.T105/01.E	70026749	+
	KA40BT.T205/01.E	70032799	KA40BT.T105/01.E	70032816	+
	KA63B.T205/01.E	70031314	KA63B.T105/01.E	70031316	+
	KA63BT.T205/01.E	70033038	KA63BT.T105/01.E	70033018	+

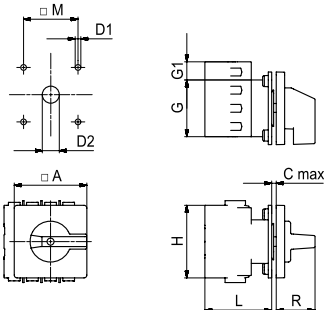
D1	D2	M	A	G	G1	G2	H	L	R	Cmax
5	10-15	48	64	50	16	16	64	58,9	40	4

SWITCH DISCONNECTOR

Front mounting, 4-hole mounting

IP66/67

Standard handle



Name	Art. no.
------	----------

3-pole	KA40B.T303.E	70031113	+
	KA40BT.T303.E	70031950	+
	KA63B.T303.E	70031114	+
	KA63BT.T303.E	70031952	+

D1	D2	M	A	G	G1	H	L	R	Cmax
5	10-15	36	64	50	-	64	58,9	34,2	4

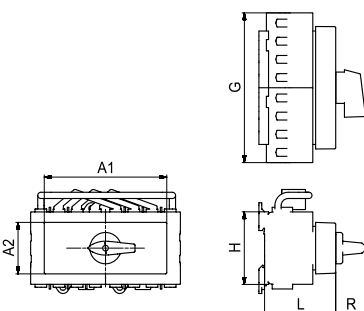
4-pole	KA40B.T304.E	70031106	+
	KA40BT.T304.E	70031953	+
	KA63B.T304.E	70049016	+
	KA63BT.T304.E	70049017	+

D1	D2	M	A	G	G1	H	L	R	Cmax
5	10-15	36	64	50	16	64	58,9	34,2	4

CHANGEOVER SWITCH

DIN rail mounting, for 45 mm standard cutout (Manual Transfer Switch)

F-handle



Name	Art. no.	Name	Art. no.
------	----------	------	----------

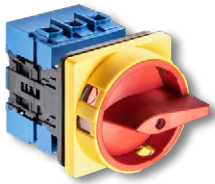
3-pole	KA40B.T903.VE2	70038129	KA40B.T903.VE2.F445	70048446	+
	KA40BT.T903.VE2	70035172	KA40BT.T903.VE2.F445	70048447	+
	KA63B.T903.VE2	70035167	KA63B.T903.VE2.F445	70048448	+
	KA63BT.T903.VE2	70035164	KA63BT.T903.VE2.F445	70048449	+

A1	A2	G	H	L	R
108	45,4	100	64	62,6	26

4-pole	KA40B.T904.VE2	70036433	KA40B.T904.VE2.F445	70048450	+
	KA40BT.T904.VE2	70048394	KA40BT.T904.VE2.F445	70048451	+
	KA63B.T904.VE2	70048395	KA63B.T904.VE2.F445	70048452	+
	KA63BT.T904.VE2	70048396	KA63BT.T904.VE2.F445	70048453	+

A1	A2	G	H	L	R
108	45,4	132	64	62,6	26

¹Through-type connector



Switch types / Auxiliary contacts*

				KA40	KA63	M510C*	H010C*	
				KA40B KA40T KA40BT	KA63B KA63T KA63BT	cam-controlled	laterally attachable	
IEC 60947-3, EN 60947-3, VDE 0660 part 107								
Rated insulation voltage U_i				V	690	690	690	690
Rated impulse withstand voltage U_{imp}				kV	6	6	-	-
Rated uninterrupted current $I_U/I_{th}/I_{the}$				A	40	63	16	16
Rated operational current I_e								
AC-15	3-phase, 3-pole	110 V–240 V 380 V–440 V 500 V	A	- - -	- - -	6 3 1,5	6 4 -	
AC-21A	3-phase, 3-pole	20 V–690 V	A	40	63	16	16	
AC-22A	3-phase, 3-pole	20 V–690 V	A	40	63	-	-	
Rated switching capacity								
AC-3	3-phase, 3-pole	220 V–240 V	kW	7,5	11	-	-	
		380 V–440 V		15	18,5	-	-	
		500 V		15	22	-	-	
		660 V–690 V		15	15	-	-	
AC-23A	3-phase, 3-pole	220 V–240 V	kW	11	11	-	-	
		380 V–440 V		20	22	-	-	
		500 V		25	30	-	-	
		660 V–690 V		25	25	-	-	
Short-circuit resistance								
Max. fuse rating		gG characteristic	A	50	63	-	-	
Rated short-time withstand current		(1 sec. current)	A	850	950	-	-	
Max. conductor cross section - Use only copper conductors								
solid / stranded wire			mm ²	25	25	2,5	2,5	
flexible wire			mm ²	16	16	2,5	2,5	
flexible wire with wire-end ferrules according to DIN 46228			mm ²	16	16	2,5	2,5	

USA / Canada								
Rated insulation voltage U_i				V	600	600	600	600
Rated operational current I_e								
Pilot Duty		Heavy	VAC	A600	A600	A600	A600	
Ampere Rating		ON/OFF	600 V	A	42	60	10	10
Max. conductor cross section - Use only copper conductors								
solid / stranded wire			AWG	4	4	12	12	
flexible wire: AWG wire (without wire-end ferrules)			AWG	6	6	14	14	
Switching capacity								
Motor normal load DOL-Rating (similar to AC-3)	3-phase, 3-pole	110 V–120 V	HP	5	5	-	-	
		220 V–240 V		15	15	-	-	
		440 V–480 V		25	30	-	-	
		550 V–600 V		30	40	-	-	

General technical information								
Twist torque Clamping screw				Nm/lb-in	2/18	2/18	0,6/5	0,6/5
Minimum voltage								
upon request								
Power loss per pole at I_U					0,9 W	1,9 W	0,6 W	0,8 W
Recommended screwdriver								
Cross-tip screwdriver		PH2	KA40, KA40B, KA63, KA63B			PH1	PH1	
Torx screwdriver		T20	KA40T, KA40BT, KA63T, KA63BT			-	-	
Slot screwdriver		1,2x1,5	all			0,8x4	0,8x4	
Stripped length of the connection cable					15 mm	15 mm	8 mm	8 mm
Vibration resistance								
min. 4 g, 2-100 Hz, 1,6 mm						-	-	
Shock resistance								
min. 5 g, 6 ms						-	-	
Min. ambient temperature of contact unit								
-5 °C								
Max. ambient temperature of contact unit								
open at 100 % I_U/I_{th}		50 °C over 24 hours with peaks of up to 55 °C						
encapsulated at 100 % I_{the}		35 °C over 24 hours with peaks of up to 40 °C						
Storage temperature								
-40 °C up to 85 °C (at temperatures below -5 °C, no shock load permissible)								

Approvals and standards							
IEC 60947 EN 60947							

* Except for types with Torx screws



 Kraus & Naimer

www.krausnaimer.com

© Kraus & Naimer, 14.03.2023